

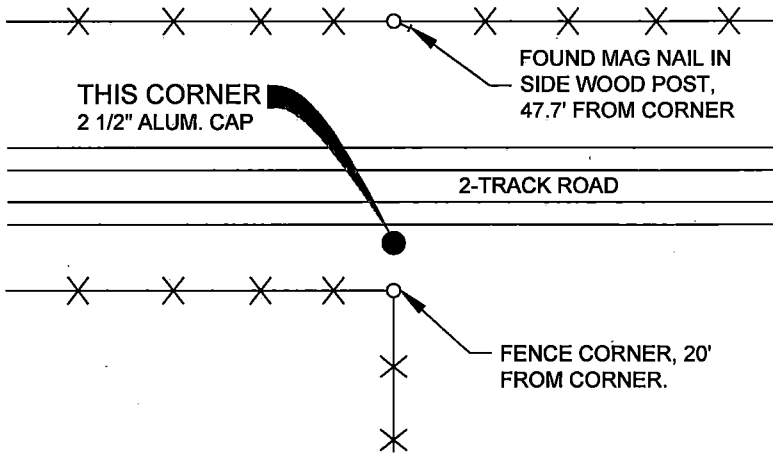
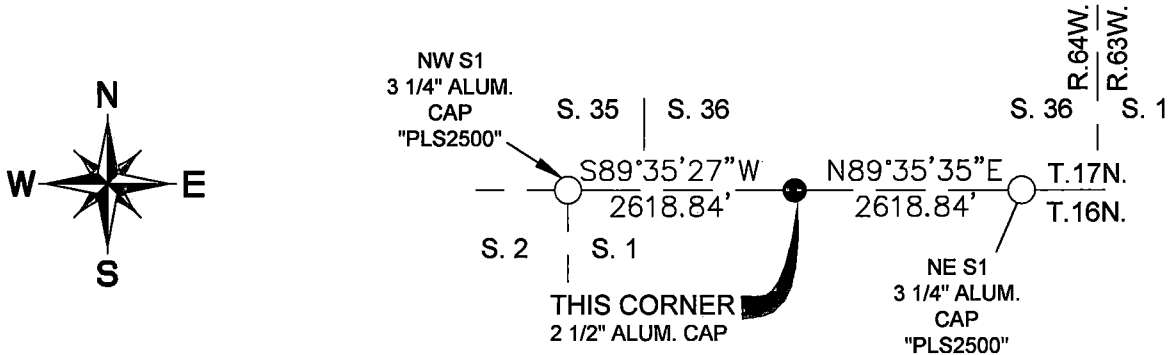
State of Wyoming Corner Record

(In compliance with the *CORNER PERPETUATION AND FILING ACT*, Wyoming Statutes, 1997 Section 33-29-140 et. seq., and the Rules and Regulations of the Board of Professional Engineers and Professional Land Surveyors)

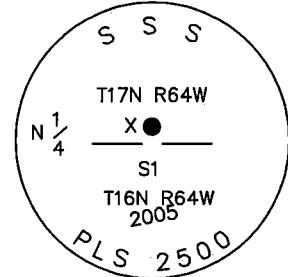
Record of original survey and citation of source of historical information (if corner is lost or obliterated). Description of corner monumentation evidence found and/or monument and accessories established to perpetuate the location of this corner. Sketch of relative location of monument, accessories, and reference points with course and distance to adjacent corner(s) (if determined in this survey).

Evidence Found: Found 2 1/2" aluminum cap marked and situated as shown below. Cap is set 0.1 below ground.

Perpetuation: None.



Monument inscription



2 1/2 INCH DIAMETER ALUMINUM CAP

Date of Field Work: 04-27-2018 Office Reference: Book LAR-22 Pg 5

This corner record was prepared by me or under my direction and supervision.

Cross Index Plat

1	2	3	4	5	6	7	8	9	10	11	12	13	14	15	16	17	18	19	20	21	22	23	24	25		
A																										
B																										
C	6	5	4	3	2	1																				
D																										
E																										
F																										
G	7	8	9	10	11	12																				
H																										
J																										
K																										
L	18	17	16	15	14	13																				
M																										
N																										
O																										
P	19	20	21	22	23	24																				
Q																										
R																										
S																										
T	30	29	28	27	26	25																				
U																										
V																										
W																										
X	31	32	33	34	35	36																				
Y																										
Z																										
	1	2	3	4	5	6	7	8	9	10	11	12	13	14	15	16	17	18	19	20	21	22	23	24	25	



BRIAN L. SCHMALZ
PLS 11268



RECORDED 6/15/2018 AT 2:15 PM BK# 2589 PG# 2830
Debra K. Lee, CLERK OF LARAMIE COUNTY, WY PAGE 1 OF 1

RECP #: 733261